



*Step up to tomorrow*

JOIN THE ICAEW STUDENT SCHEME

# What is it?

The ICAEW Student Scheme is an online portal full of resources that will help you enhance your skills and increase your employability. With content created specifically for ICAEW students, the scheme is updated frequently and always evolving to support you with your professional and personal development.

Available any time and from anywhere in the world, here's what you'll get as a student of the scheme:

## COURSES AND CERTIFICATIONS



**Xero online courses** - With the Xero software used by businesses all over the world, these cloud-accounting courses will provide you with vital digital skills and a certificate greatly valued by employers.



**ICAEW Certificate in Finance, Accounting and Business (ICAFB)\*** - Gain a qualification that demonstrates your knowledge in business, finance and accounting. With flexible study options, you can learn anywhere and anytime.



**Microsoft Excel online training** - Perfect for all levels, with this online accredited course you can start from scratch or fill in any knowledge gaps.

## SKILLS DEVELOPMENT

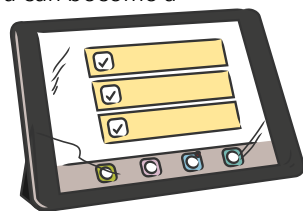
With businesses struggling to find candidates with the soft skills they need, you can get a head start and develop yours, making you more employable in any career you choose.

Find out how you can gain essential soft skills, explore and interact with the content available to you and understand more about how you can become a sought-after professional.

## JOB HUNTING

Not sure how to write a stand-out CV, what you should say at interviews or how to succeed at assessment centres? Use the scheme's resources to develop your skills and increase your chances of landing the right job for you.

You will also receive monthly newsletters, keeping you up to date with the latest tips and advice on employability.



\*The ICAEW CFAB registration fee - normally £165 - is included in the scheme. Please note that learning materials and exam costs are not covered.

# What are the benefits?

By signing up to the scheme, you:

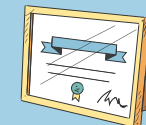
1

gain access to content created by ICAEW - a professional membership organisation that has been supporting professionals for over a century;



2

can gain certifications and a qualification, adding to your knowledge and to your CV;



3

will develop the soft skills that employers are looking for and understand how to demonstrate them;



4

and have a great stepping stone towards a career in chartered accountancy.



## How do you get started?

Visit [icaew.com/studentscheme](https://www.icaew.com/studentscheme) to find out more and to start your registration.

## How much does it cost?

With a one-off £20 registration fee, you'll have access to the portal for the duration of your university studies and for one year after your qualification date.

There are over 1.8m chartered accountants and students around the world – talented, ethical and committed professionals who use their expertise to ensure we have a successful and sustainable future.

Over 181,500 of these are ICAEW Chartered Accountants and students. We train, develop and support each one of them so that they have the knowledge and values to help build local and global economies that are sustainable, accountable and fair.

We've been at the heart of the accountancy profession since we were founded in 1880 to ensure trust in business. We share our knowledge and insight with governments, regulators and business leaders worldwide as we believe accountancy is a force for positive economic change across the world.

[www.charteredaccountantsworldwide.com](http://www.charteredaccountantsworldwide.com)  
[www.globalaccountingalliance.com](http://www.globalaccountingalliance.com)

## ICAEW

Chartered Accountants' Hall  
Moorgate Place  
London  
EC2R 6EA  
UK

T +44 (0)1908 248 250  
F +44 (0)1908 248 260  
E [careers@icaew.com](mailto:careers@icaew.com)  
[icaew.com/careers](http://icaew.com/careers)



ICAEW Careers



@ICAEW\_Careers



ICAEW Careers



icaew\_uk



Become an ICAEW Chartered Accountant

